



# COMPANY PROFILE



# Keilock Newage Bangladesh Limited.



## COMPANY PROFILE

Founded to produce high class woven apparel for the international market such as USA, CANADA, Australia & Europe market, we have won in less than decade nominations of a number of leading retail houses such as **H&M, NEXT, Rowlinson, Inditex, CAMAIEU** etc. To produce for them fashionable garments.

The 6,250 square meters One floors factory is set in Newage Industrial Park, Ashulia. Our factory have received certification of compliance from a number of our buyers. Our modern facilities house cutting-edge technology that serves to meet the ever-changing fashions.

“To help ensure the economic development of the country and improve the standard of living of the people through Sustainable and Environmentally-friendly investments.”

Since-1984



## CAPACITY

**Woven** : 0.7 mPcs/month by utilizing **20 production lines**

Annual Turnover	: \$ 15.55 Million
Employee	: 2,650
Production capacity	: 2.88 Million Pcs
No of Line	: 20
No. of Basic machines	: 1368



## SISTER CONCERN

- Newage Apparels Limited
- Newage Textiles Limited
- Kei Lock Newage Bangladesh Limited (Foreign Collaboration)
- Jimay Newage (HK) Dyeing and Printing Limited (Foreign Collaboration)

NEWYORKER

NEW FRONTIER  
FASHION & SPORTSWEAR

Everett's family  
We produce fashion apparel.

MANGO

PRIMARK

STORMTECH  
PERFORMANCE

C&A next

TAKKO  
FASHION

H&M

Target

COLIN'S

ALDI

KONTOOR

Rowlinson  
smarter for longer  
EMPLOYEE OWNED

LDL

INDITEX

Loblaws

# CONTACT



## **Executive Director**

**Bikash Chandra Paul**

Cell: 01713015922

e-mail: [bikash@newage-group.com](mailto:bikash@newage-group.com)

**Corporate Office** | **Factory**

42-I, Indira Road, Dhaka – 1215

Nischintapur, Purbo Norshingpur, Ashulia, Savar, Dhaka – 1341





## Specialized in Production

Kei Lock Newage is specialized in producing **Ladies & Boys Blazer, Waist Coat, Arthur Coat, Padding Jacket, Corporatewear, etc.**

Also have a broader capability to handle the latest types of fabrications, namely **Cotton, Viscose, Linen, Denim, Velvet, Terry cloth and Polyester with versatile weaving patterns**, for instance, **Plain, Twill Satin, Flannel, Dobby, Jacquard, Double Cloth, Crepe** and many more.

In terms of commercial, Newage uses LC and TT as the payment method and considers CNF, FOB, and CIF for unit price.

WOOL JACKET



BLAZER



ARTHUR COAT



WAIST COAT



KIDS JACKET

## Quality Assurance

In the normal range in this initial random check, the full quantity is inspected to assure the acceptability of the consignment. We have a self Quality System that ensures optimum product quality by practicing

**AQL-1.5** final auditing method in compliance with **ISO 9001:2015** guideline, **TQM**, and **GMP**.



# SUSTAINABILITY



**Women  
Empowerment**



**WSUP**



**Fair Shop**



**Digital Payment**



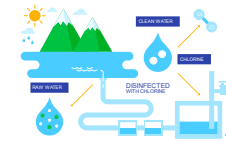
**RSC 100% initial CAP Completed.**



**GHG**

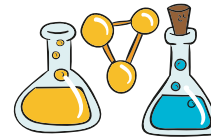
**Goal 30%**

- Installation of Solar PV
- Purchase **I-REC**.



**Water consumption goal**

**10%**



CleanChain & BHive Our current **ZDHC**

**MRSL** incheck percentage is **90%**



**HIGG FEM** module score  
is **80.**



**Reverse  
Resources**

Circular Economy

# Certifications

We have listed  
down our major  
certification







We care

# GULSHANARA SCHOOL

A free primary education center

## GULSHANARA NURSING COLLEGE



Microbiology lab



650+Nurse



650+Children







# MOHAMMAD ABDUR RAZZAQUE HOSPITAL

Providing advanced medical care to poor



**50**  
Beds



**4**  
Specializations  
Eye, Gynae, Dental,  
General



**10000**  
Free Health Cards

**We care**



**Our contributions towards the community**





THANK **YOU**

*thank you so much for  
your attention*

