

COMPANY PROFILE



Newage Apparels Limited

Since-1995

"To help ensure the economic development of the country and improve the standard of living of the people through Sustainable and Environmentally-friendly investments."



COMPANY PROFILE

Founded to produce high class knit & woven apparel for the international market such as USA, CANADA, Australia & Europe market, we have won in less than decade nominations of a number of leading retail houses such as **H&M, C&A, KONTOOR, PRIMARK, ALDI, NEWYORKER, NEXT, COLIN'S, TARGET, INDITEX, STORMTECH, NEW FRONTIER** etc. to produce for them fashionable garments.

The 29,000 square meters three-unit factory and we have also Printing & Embroidery section is set in Newage Industrial Park Ashulia, our factories have received certification of compliance from a number of our buyers. Our modern facilities house cutting-edge technology that serves to meet the ever-changing fashions.



SISTER CONCERN

- Newage Garments Limited
- Newage Textiles Limited
- Kei Lock Newage Bangladesh Limited (**Foreign Collaboration**)
- Jimay Newage (HK) Dyeing and Printing Limited (**Foreign Collaboration**)

Annual Turnover	: \$ 64 Million
Employee	: 3,750
Production capacity	: 2.88 Million Pcs
No of Line	: 44
No. of Basic machines	: 2664



CAPACITY

Woven	: 0.56 M	Pcs/month by utilizing	20 production lines
Knit	: 1.54 M	Pcs/month by utilizing	38 production lines
CAP	: 0.32 M	Pcs/month by utilizing	06 production lines
Printing	: 0.30 M	Pcs/month by utilizing	04 production tables
Embroidery	: 0.16 M	Pcs/month by utilizing	04 production machines

NEWYORKER

NEW FRONTIER

Ernsting's family

MANGO

PRIMARK

STORMTECH
PERFORMANCE

C&A next

TOKKO

H&M

Target

COLIN'S

ALDI

KONTOOR

Rowlinson
EMPLOYEE OWNED

LIDL

INDITEX

Loblaw's

CONTACT



Executive Director

Bikash Chandra Paul

Cell: 01713015922

e-mail: bikash@newage-group.com

Corporate Office | **Factory**

42-I, Indira Road, Dhaka – 1215

Nischintapur, Purbo Norshingpur, Ashulia, Savar, Dhaka – 1341

Specialized in Production

Newage is specialized in producing **Blouse, Shirt, Dress, Trouser, Jersey, Shorts, Nightwear, Underwear, Home Textile, Hats & Caps, etc.**

Also have a broader capability to handle the latest types of fabrications, namely **Cotton, Viscose, Linen, Denim, Velvet, Terrycloth and Polyester** with versatile weaving patterns, for instance, **Plain, Twill Satin, Flannel, Dobby, Jacquard, Double Cloth, Crepe** and many more.

In terms of commercial, Newage uses LC and TT as the payment method and considers CNF, FOB, and CIF for unit price.

T-SHIRT & POLO SHIRT



PRODUCT PORTFOLIO

HOODIE & JACKET



WOMEN'S SHIRT, SKIRT & TOPS



CAP & HAT



MEN'S SHIRT



TROUSER & BOXER

Quality Assurance

In the normal range in this initial random check, the full quantity is inspected to assure the acceptability of the consignment. We have a self Quality System that ensures optimum product quality by practicing

AQL-1.5 final auditing method in compliance with **ISO 9001:2015** guideline, **TQM**, and **GMP**.

SUSTAINABILITY



**Women
Empowerment**



WSUP



Fair Shop



Digital Payment



RSC 100% initial CAP Completed.



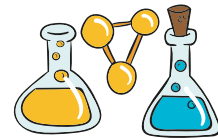
GHG

Goal 30%

- Installation of Solar PV
- Purchase **I-REC**.



**Water consumption goal
10%**



CleanChain & BHive Our current **ZDHC
MRSL** incheck percentage is **90%**



HIGG FEM module score
is **80.**



**Reverse
Resources**
Circular Economy



Certifications

We have listed
down our major
certification



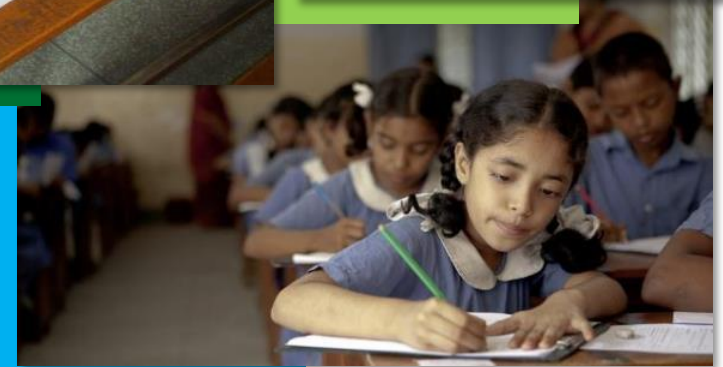


We care

GULSHANARA NURSING COLLEGE

GULSHANARA SCHOOL

A free primary education center



650+Children



650+Nurse





MOHAMMAD ABDUR RAZZAQUE HOSPITAL

Providing advanced medical care to poor



50
Beds



4
Specializations
Eye, Gynae, Dental,
General



10000
Free Health Cards

We care



Our contributions towards the community



THANK YOU

*thank you so much for
your attention*